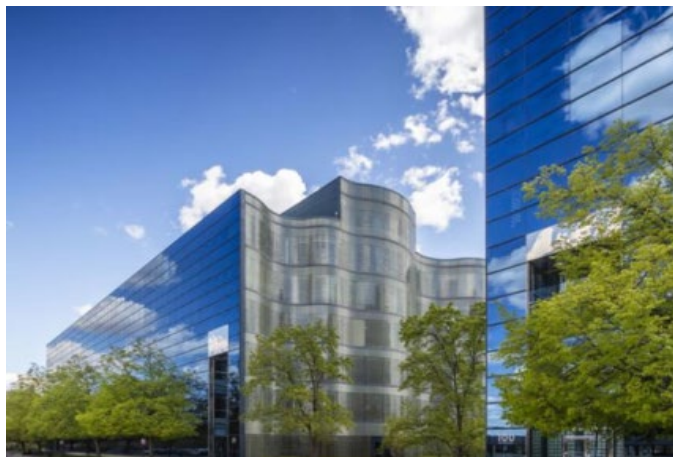


Liberty Center - Thomas Duke Retro-Commissioning Program Express Track



What is Retro-Commissioning?

The DTE Energy Retro-Commissioning (RCx) Program provides a professional study of your existing building and process systems. Program specialists help you optimize and improve comfort and functionality while decreasing energy and maintenance costs over time.

The program is focused on tuning-up your existing equipment for more efficient performance, rather than upgrading or replacing it.

The retro-commissioning study is complimentary with opportunities for additional incentives and bonuses. Contact us to see if you qualify.

Get Started Today!

For more information on the DTE Retro-Commissioning Program, visit rcx.dteenergy.com, send an email to DTERC@esciences.us or call 248.430.5579.



Project Details

The Liberty Center, located at 50 & 100 West Big Beaver Road in Troy, is a premium commercial office building owned by Thomas Duke Company.

The following energy efficiency improvements were identified, implemented, and verified through the RCx Program at the Liberty Center:

- Adjusted equipment operating schedules
- Adjusted economizer lockout temperature
- Adjusted discharge air resets

Project snapshot

Program participant	Thomas Duke Company
Building size	298,813 sq. ft
Verified annual electric savings	610,803 kWh
Simple payback	Immediate

Description	Cost (-)	Benefit (+)
Annual energy cost savings estimate		\$61,691
Implementation cost	\$0	
Implementation funding		\$2,000
Customer verification bonus		\$24,432
Customer bank bonus		\$6,108
Total benefit		\$94,231

